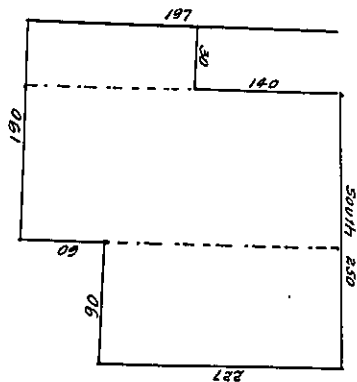


227  
 90  
 20430  
 5910  
 26340 / 164  
 107

197  
 30  
 5910     337  
           1

337  
 60  
 277



John Witmore  
 200<sup>g</sup>  
 in right of Martin Kurdig  
 and Hans Heer.  
 Lancaster County  
 Ent<sup>d</sup>  
 Witmore  
 Useless  
 John Witmore  
 John Witmore  
 Ret<sup>d</sup> 30 September 1735.

No. 8. Chester O. R.

K.